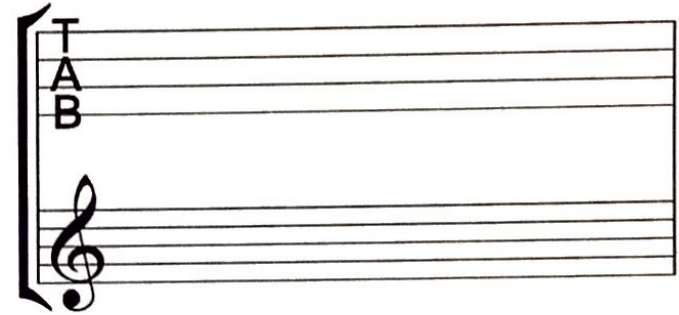
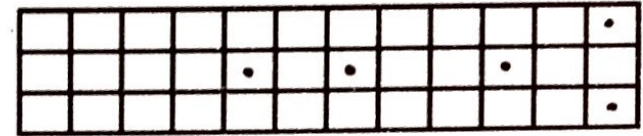


UFCC SCALE & CHORD WORKSHEET

DIRECTIONS: Pencil in the "notes" on the Standard format or the TAB format (or both) and on the fretboard diagram. Feel free to pencil in higher "notes" on the fretboard.



Scale Degrees

Letter names + $b / \#$

1 2 3 4 5 6 7 [8]

— — — — — — — —

KEY of _____

MODE	INTRVL SEQ		KEY
I	TTsTTTs	MAJOR	CDEFGAB
II	TsTTsT		DEFGABC
III	sTTTSTT		EFGABCD
IV	TTTsTTs		FGABCDE
V	TTsTTsT		GABCDEF
VI	TsTTsTT	MINOR	ABCDEFG
VII	sTT-TTT		BCDEFGA

Other names for the scale degrees based on what the degree does in the scale of pitches.

- 1 = TONIC: Focus of melody and harmony. Strongest tone. Phrases usually end on TONIC.
- 2 = SUPERTONIC: Passing tone; used to resolve TONIC.
- 3 = MEDIATE: = 1/2 way Tonic & Dominant; used to harmonize either tone.
- 4 = SUBDOMINANT: = fifth below Tonic; can finish a phrase, often leads to DOM or TONIC
- 5 = DOMINANT: #2 strongest; resolution often here.
- 6 = SUBMEDIATE: 1/2 way between SUBDOM & TONIC; Used for harmonizing.
- 7 = LEADING: creates most dissonance; resolves on the TONIC.

Scale Intervals: **Major** = TTsTTTs **Minor** = TsTTsTT **For Example:** In the key of C major—C to D = T, D to E = T, E to F = s and so on. (T = Tone or Whole step, and s = Semitone or half step).

All Western major and minor keys have the above interval sequences.

Chord Formulas/Construction

CHORD	SCALE DEGREE(S)	CHORD	SCALE DEGREE(S)	CHORD	SCALE DEGREE(S)	CHORD	SCALE DEGREE(S)
Major	1-3-5	Augmented	1 - 3 - #5	Minor	1 - b 3 - 5	Diminished	1 - b 3 - b 5
Major 6	1-3-5-6			Minor 6	1 - b 3 - 5 - 6		
Major 7	1-3-5-7	Dominant 7	1 - 3 - 5 - b 7	Minor 7	1 - b 3 - 5 - b 7	Diminished 7	1 - b 3 - b 5 - b 7
Add 9	1-3-5-9			Minor Add 9	1 - b 3 - 5 - 9		
		Dominant 9	1 - 3 - b 7 - 9	Minor 9	1 - b 3 - b 7 - 9		
Sustained 2	1-2-5						
Sustained 4	1-4-5						

EXERCISE: Pencil in chords (your choice) onto the TAB diagrams and on the standard uke chord diagrams using the key/scale used on the opposite side [KEY ____] and the above formulas. e.g. in the key of C major the scale degrees 1-3-5 = C-E-G. Using strings and fret numbers pencil in this chord on the TAB diagram. (Refer to a chord diagram chart if need be to get started)

T							
A							
B							

